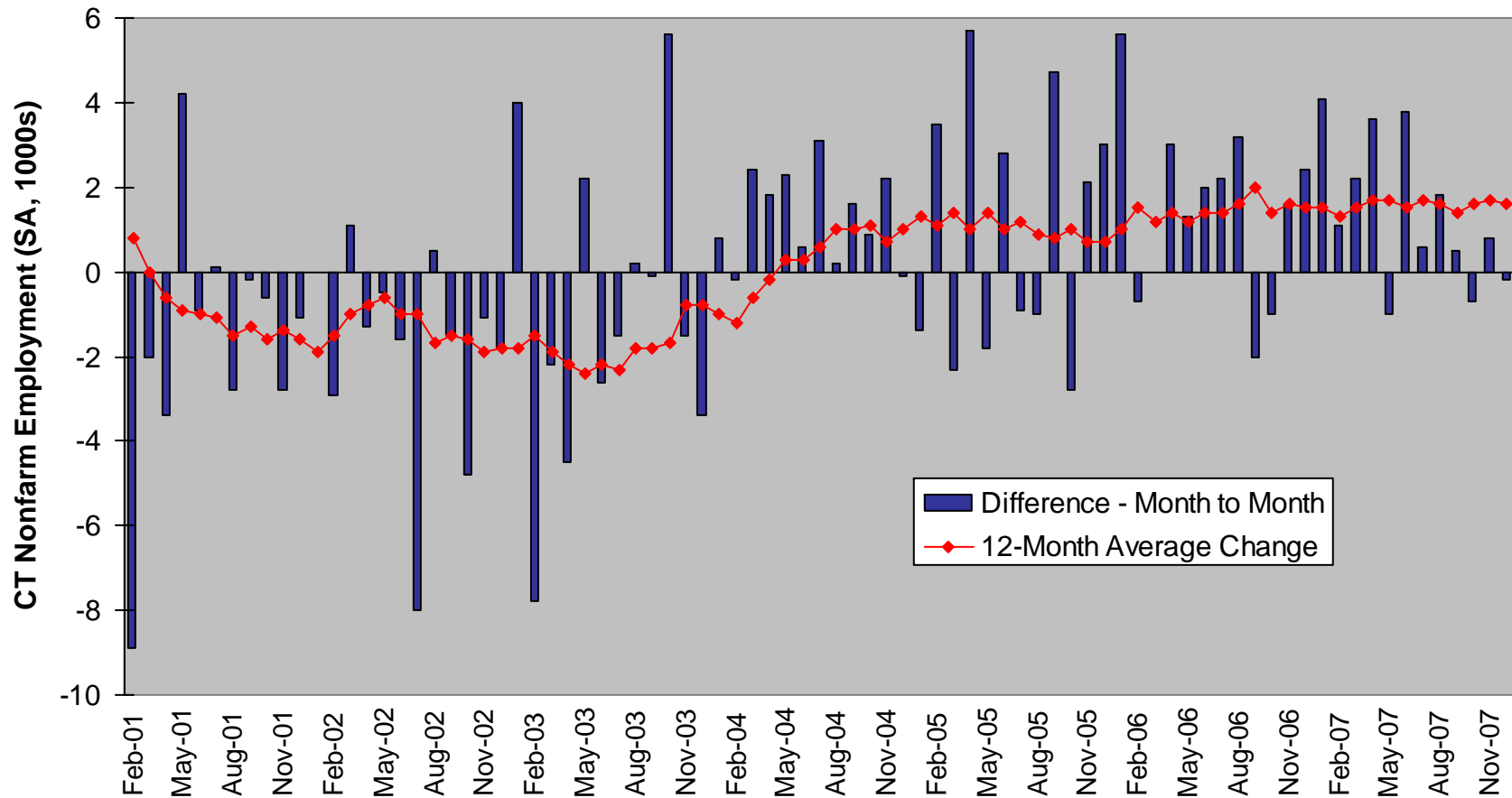
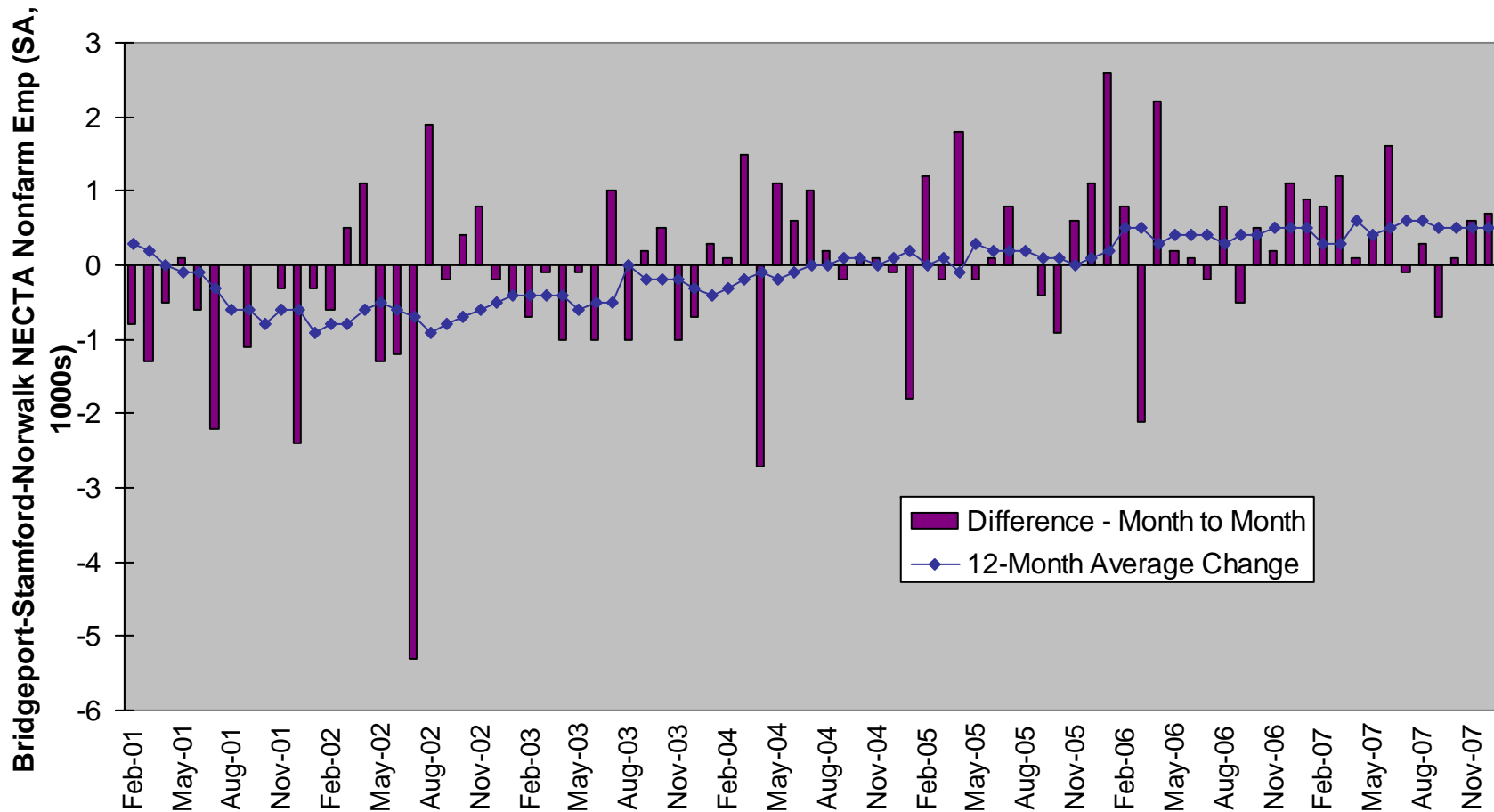


# Connecticut's 12-month average change in nonfarm employment has been positive since May 2004.



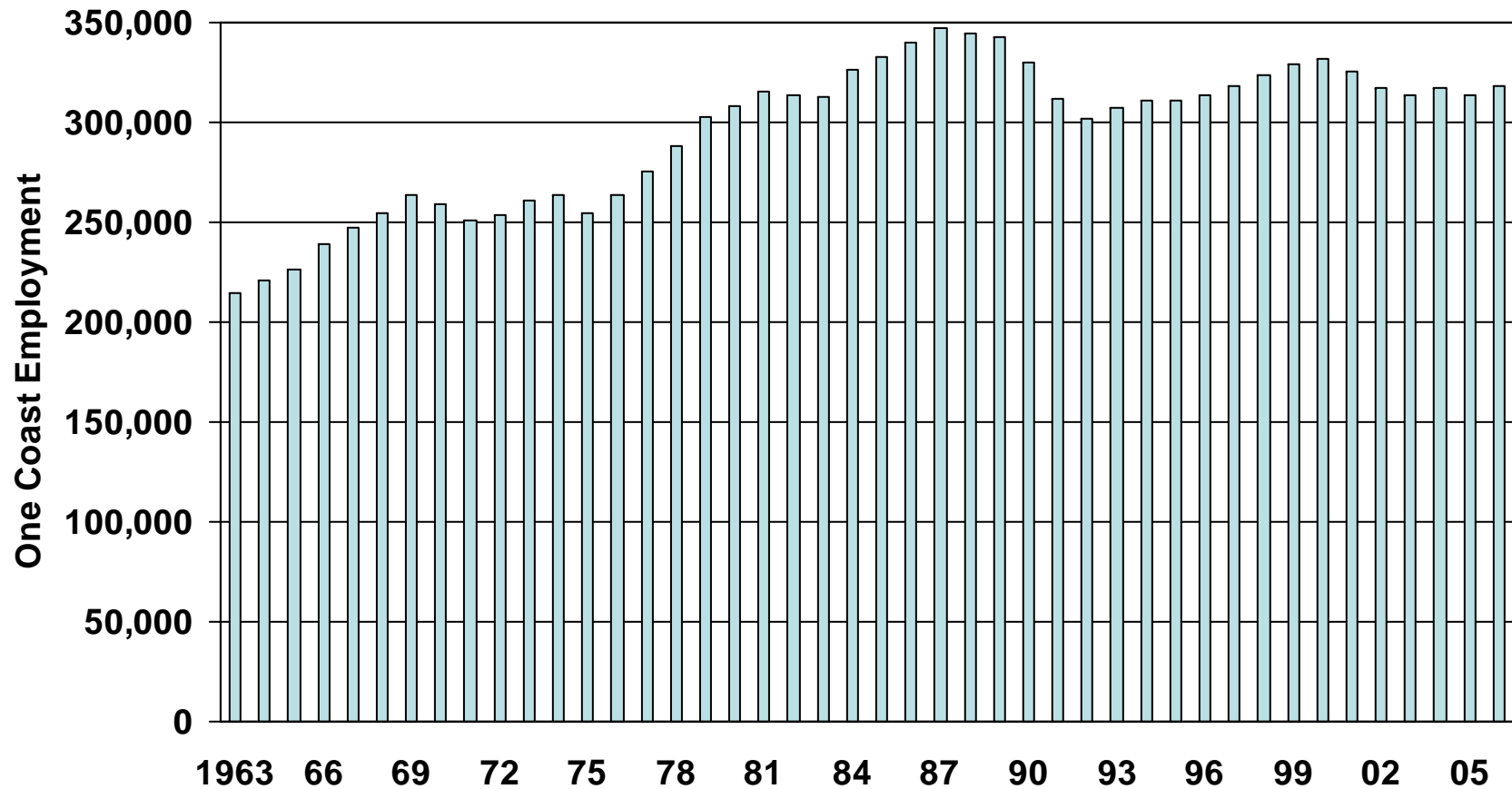
Source: Federal Reserve Bank of Boston

# Bridgeport-Stamford-Norwalk NECTA's 12-month average change in nonfarm employment has been positive since May 2005.



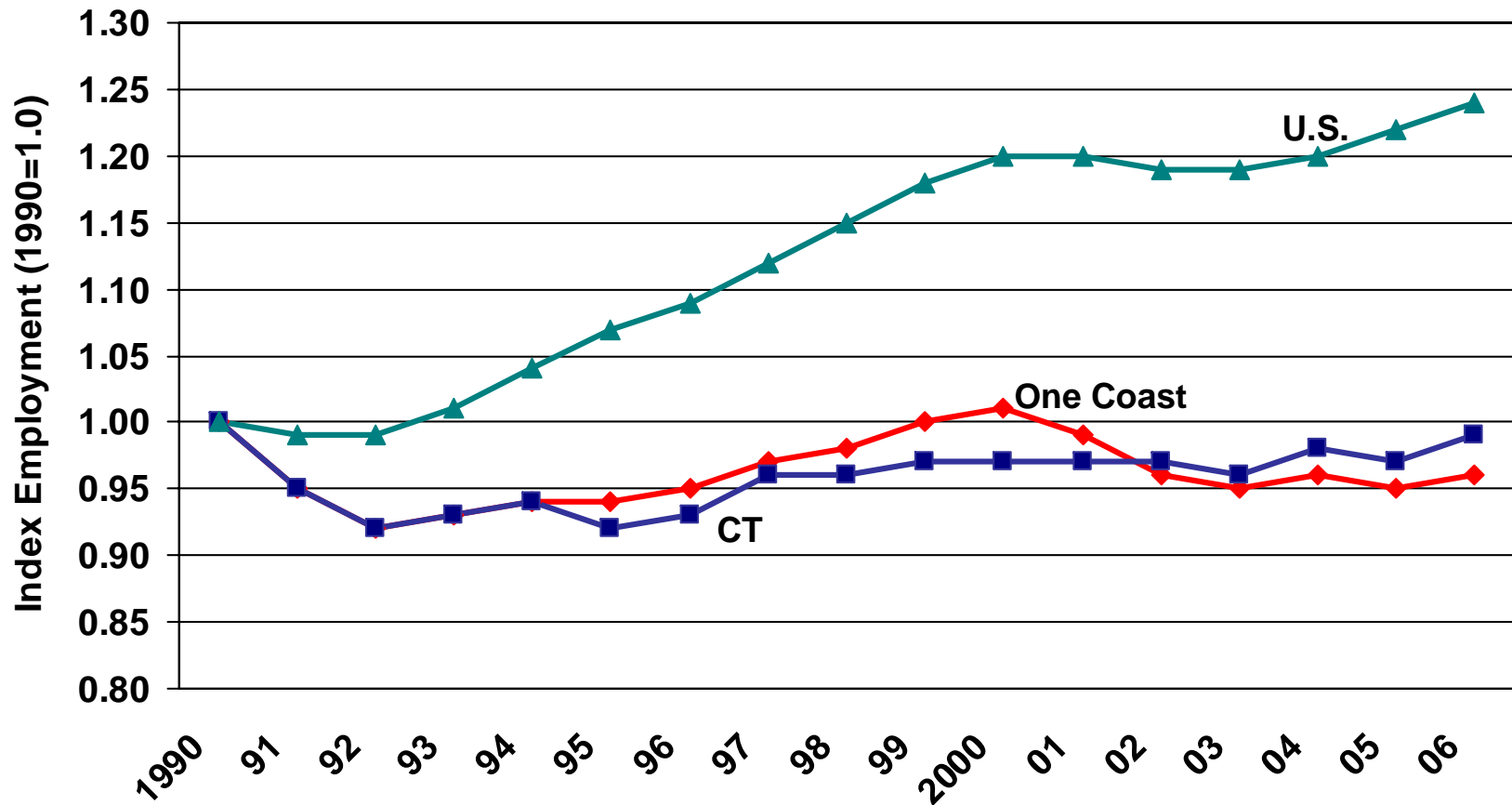
Source: Federal Reserve Bank of Boston

The One Coast Region had steady employment gains (despite cyclical declines) through 1960s, 1970s, 1980s; peaking in 1987, decreasing in the early 1990s. Employment in 2006 was less than 318,000.



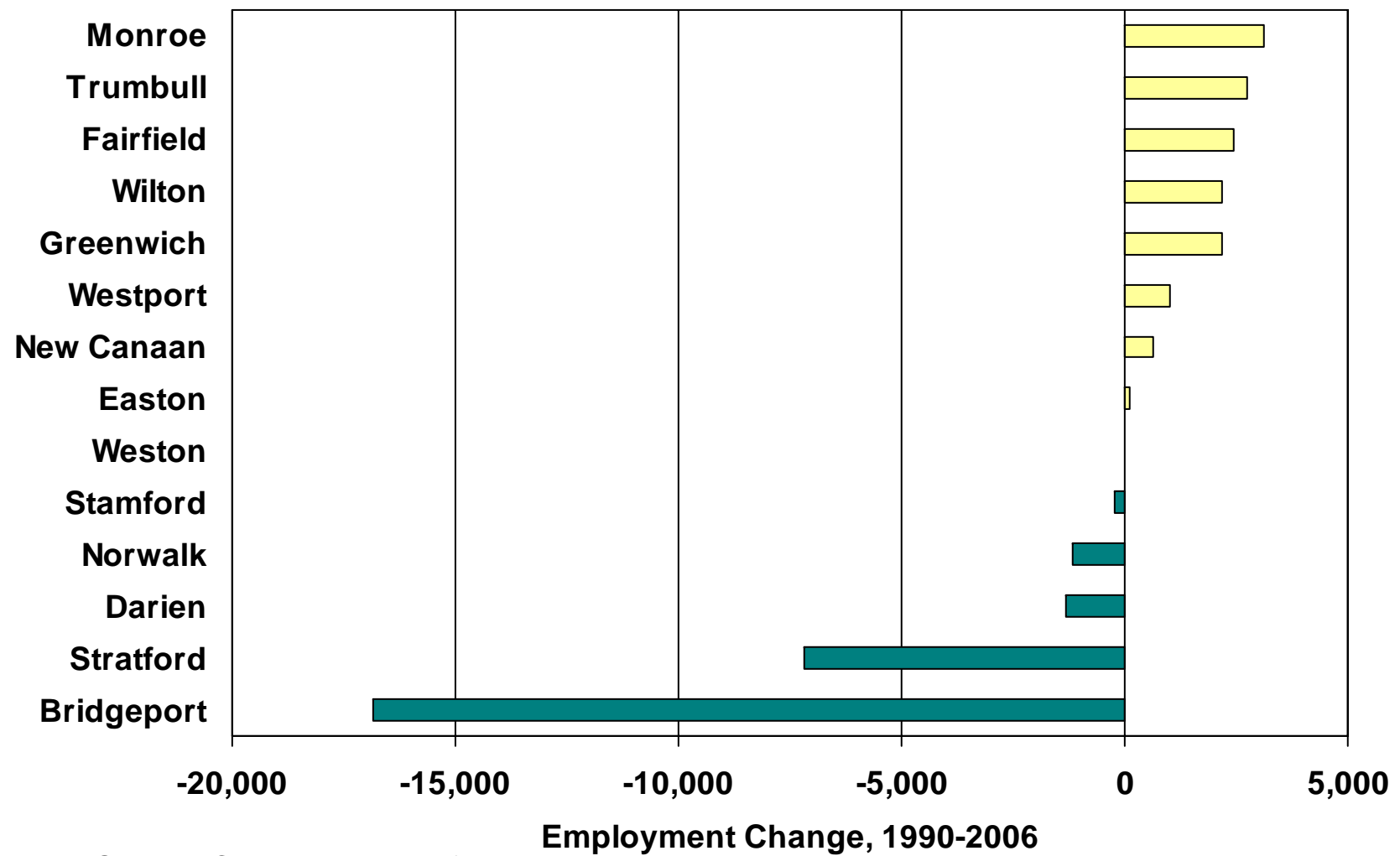
Source: CT Department of Labor

The One Coast Region and Connecticut had fewer jobs in 2006 than 1990 while the U.S. grew by almost 25 percent.



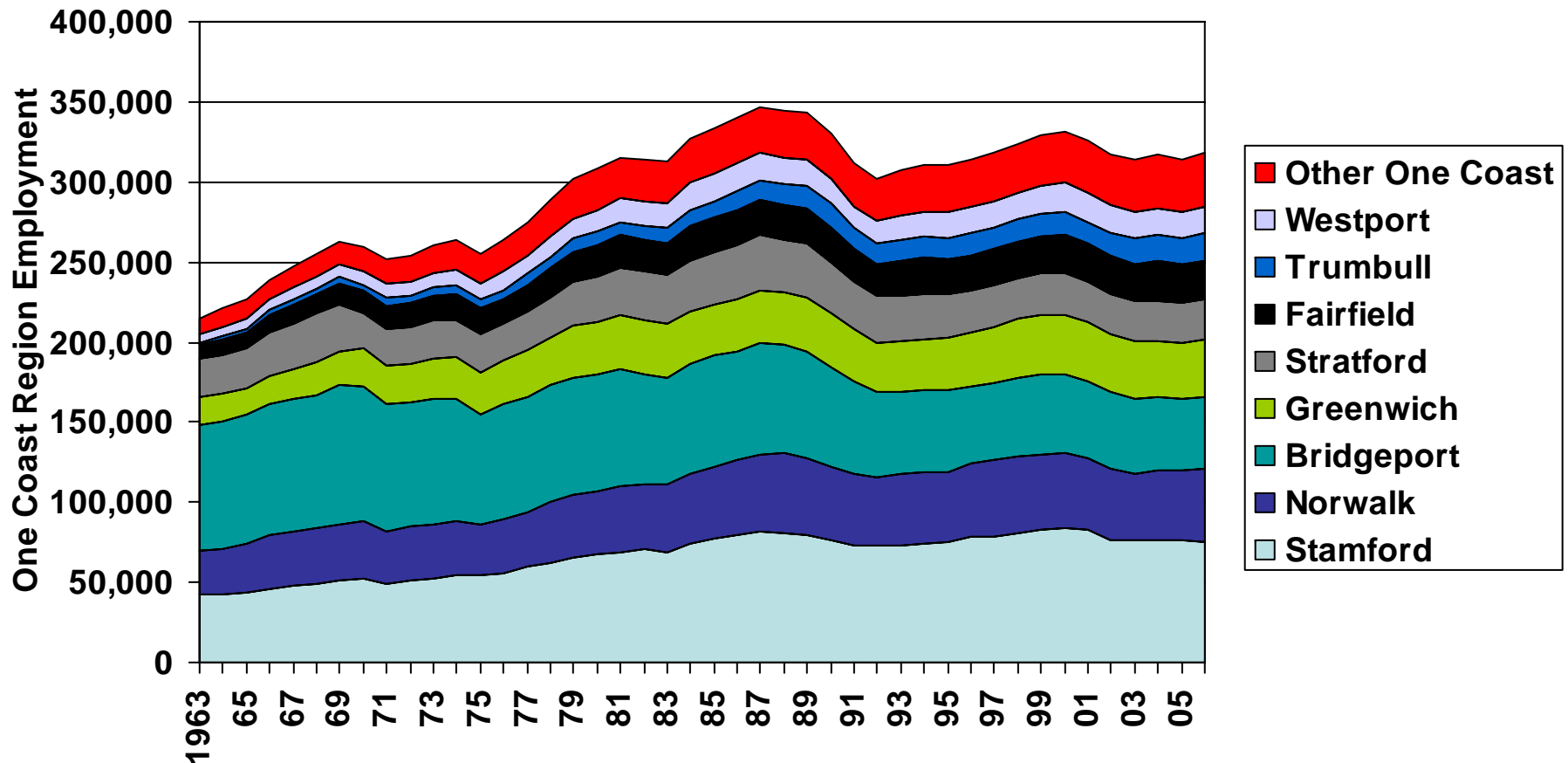
Sources: CT Department of Labor; U.S. Bureau of Labor Statistics

# Bridgeport and Stratford saw the largest employment losses in the One Coast Region between 1990 and 2006.



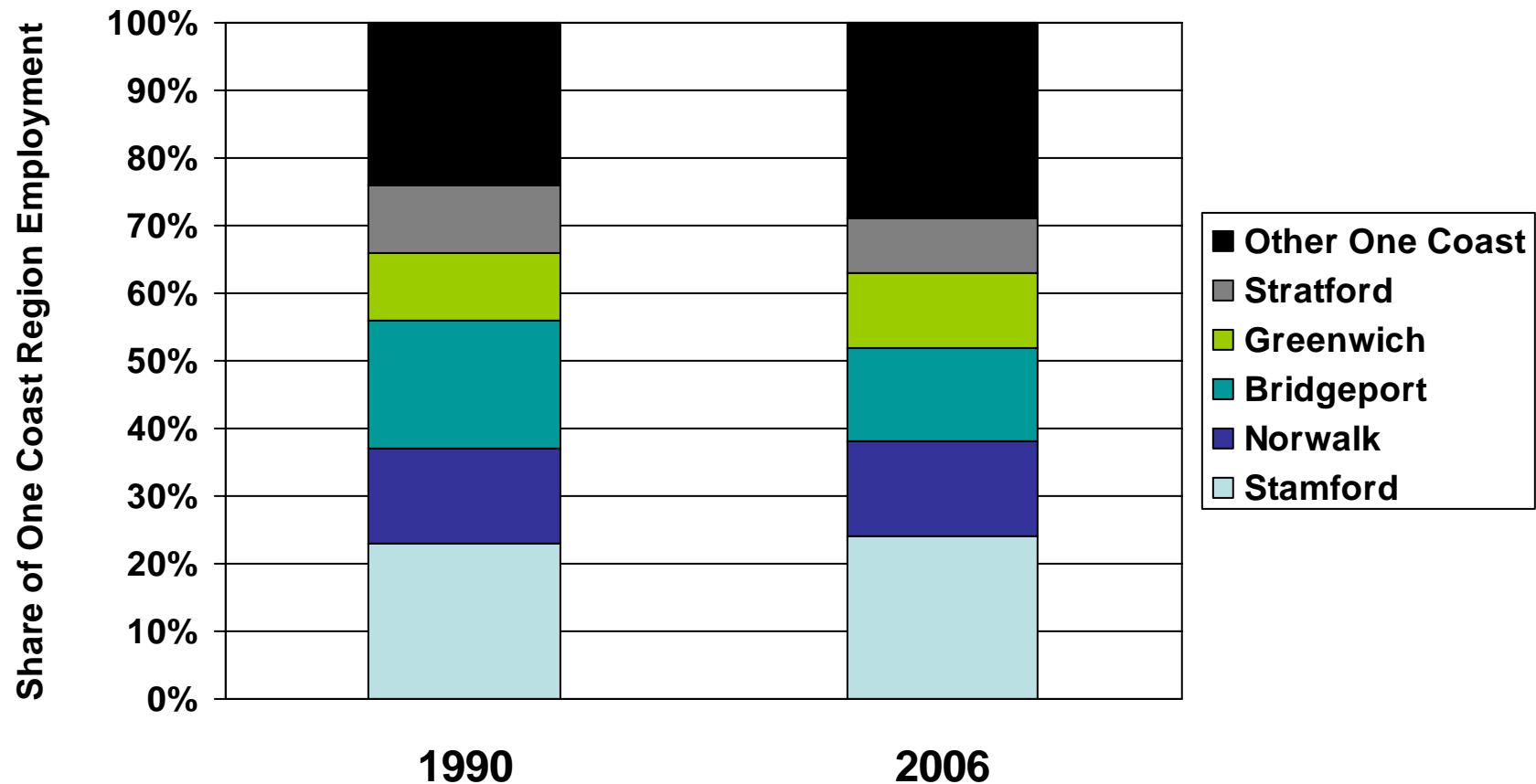
Source: CT Department of Labor

The largest shift in the spatial distribution of jobs was out of Bridgeport during the 1960s and 1970s.



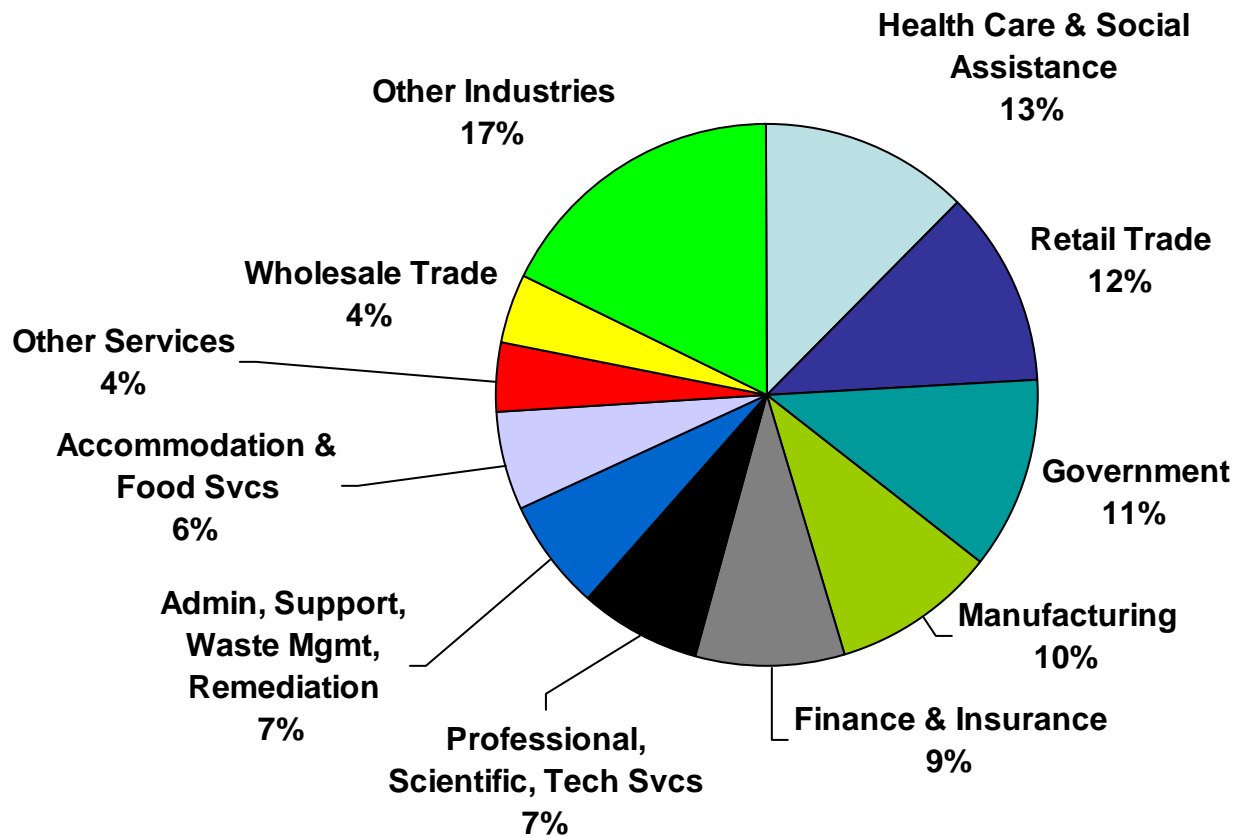
Source: CT Department of Labor

Stamford is home to about one-quarter of the One Coast jobs; Bridgeport decreased from 19% to 14% between 1990 and 2006.



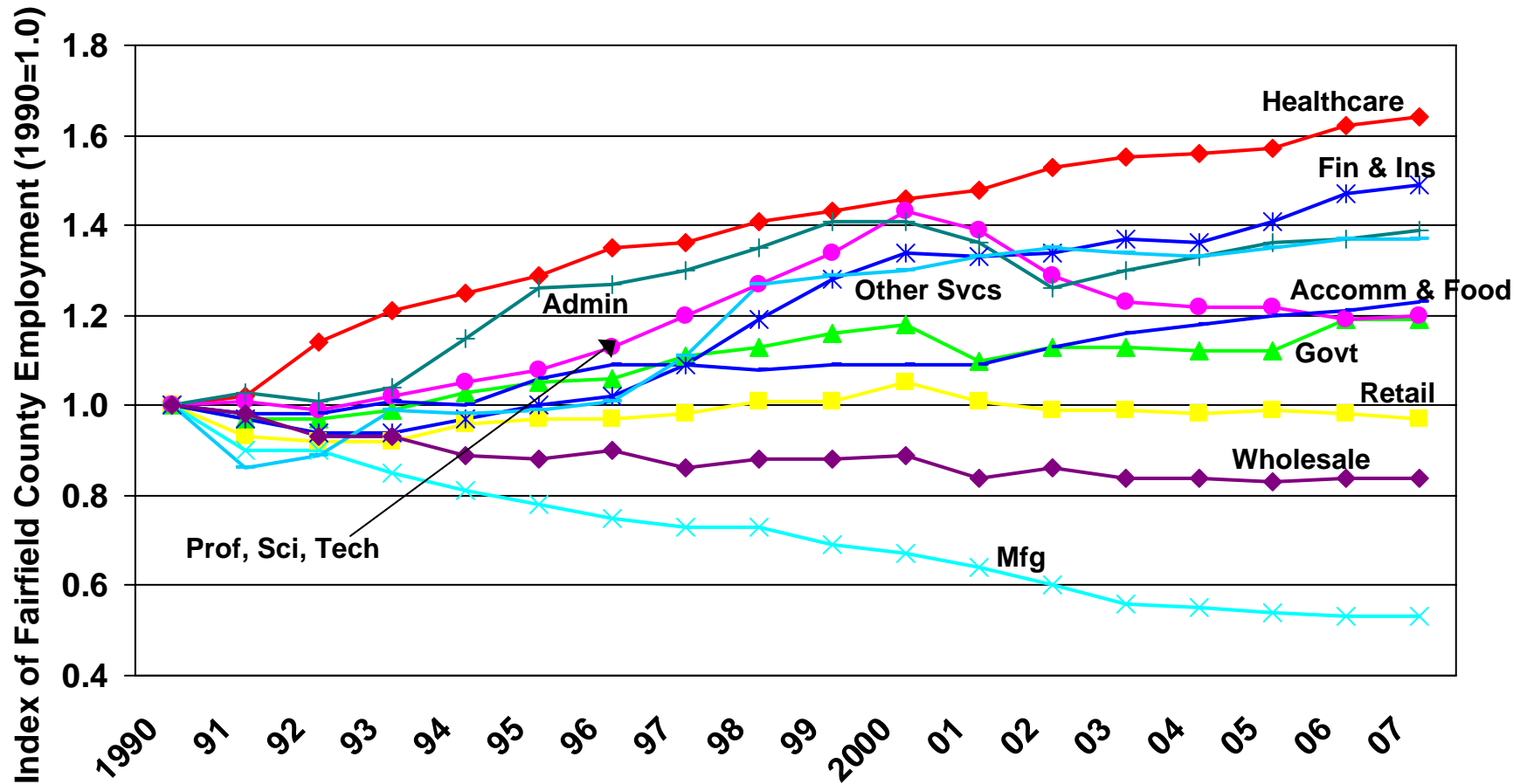
Source: CT Department of Labor

Healthcare, retail trade, government and manufacturing each represented at least 10 percent of Fairfield County's employment in 2007.



Source: Moody's Economy.com

# Seven of the 10 sectors had more employment in Fairfield County in 2007 than in 1990.



Source: Moody's Economy.com

In terms of employment in Fairfield County, three of the top 10 industries are related to healthcare, and two are financial.

<b>NAICS</b>	<b>Industry Description</b>	<b>2007 Emp (1000s)</b>	<b>% Total</b>
GVL	Local Government	39.3	9%
541	Professional, Scientific & Technical Services	30.7	7%
561	Administrative & Support Services	27.6	6%
722	Food Services & Drinking Places	22.7	5%
621	Ambulatory Health Care Services	20.3	5%
523	Securities, Commodity Contracts & Other Financial Investments	16.9	4%
551	Management of Companies & Enterprises	13.7	3%
622	Hospitals	13.6	3%
522	Credit Intermediation & Related Activities	12.5	3%
623	Nursing & Residential Care Facilities	11.4	3%
	10 Industries with Largest Employment Shares	208.7	47%

Source: Moody's Economy.com

Of the ten industries with the largest employment in Fairfield County, Securities saw the greatest growth between 1990 and 2007.

NAICS	Industry Description	Change 1990-2006	
		# (1000s)	%
GVL	Local Government	9.8	33%
541	Professional, Scientific & Technical Services	5.0	20%
561	Administrative & Support Services	7.4	36%
722	Food Services & Drinking Places	5.2	30%
621	Ambulatory Health Care Services	9.2	83%
523	Securities, Commodity Contracts & Other Financial Investments	12.4	280%
551	Management of Companies & Enterprises	-0.7	-5%
622	Hospitals	3.7	37%
522	Credit Intermediation & Related Activities	-1.3	-10%
623	Nursing & Residential Care Facilities	4.1	55%

Source: Moody's Economy.com

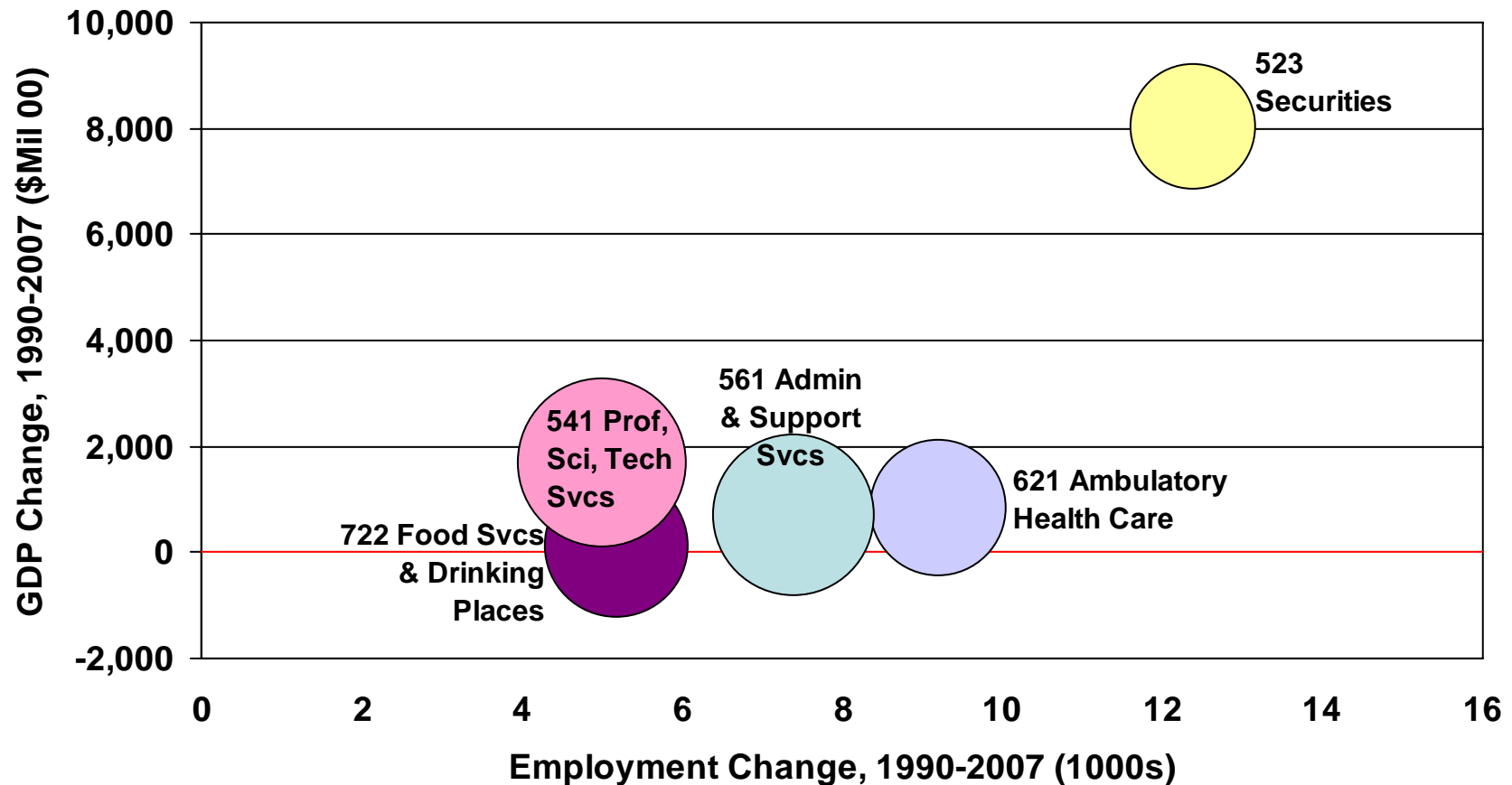
Two of the industries with the largest relative employment concentrations were financial; another two were in manufacturing.

<b>NAICS</b>	<b>Industry Description</b>	<b>Emp LQ* 2007</b>
523	Securities, Commodity Contracts & Other Financial Investments	6.70
454	Nonstore Retailers	2.87
551	Management of Companies & Enterprises	2.45
485	Transit & Ground Passenger Transportation	2.40
525	Funds, Trusts & Other Financial Vehicles	2.15
325	Chemical Manufacturing	2.15
812	Personal & Laundry Services	2.08
335	Electrical Equipment, Appliance & Component Manufacturing	2.07
511	Publishing Industries (except Internet)	1.89
712	Museums, Historical Sites & Similar Institutions	1.67

Source: Moody's Economy.com

\*Largest employment location quotients of industries with at least 500 employees

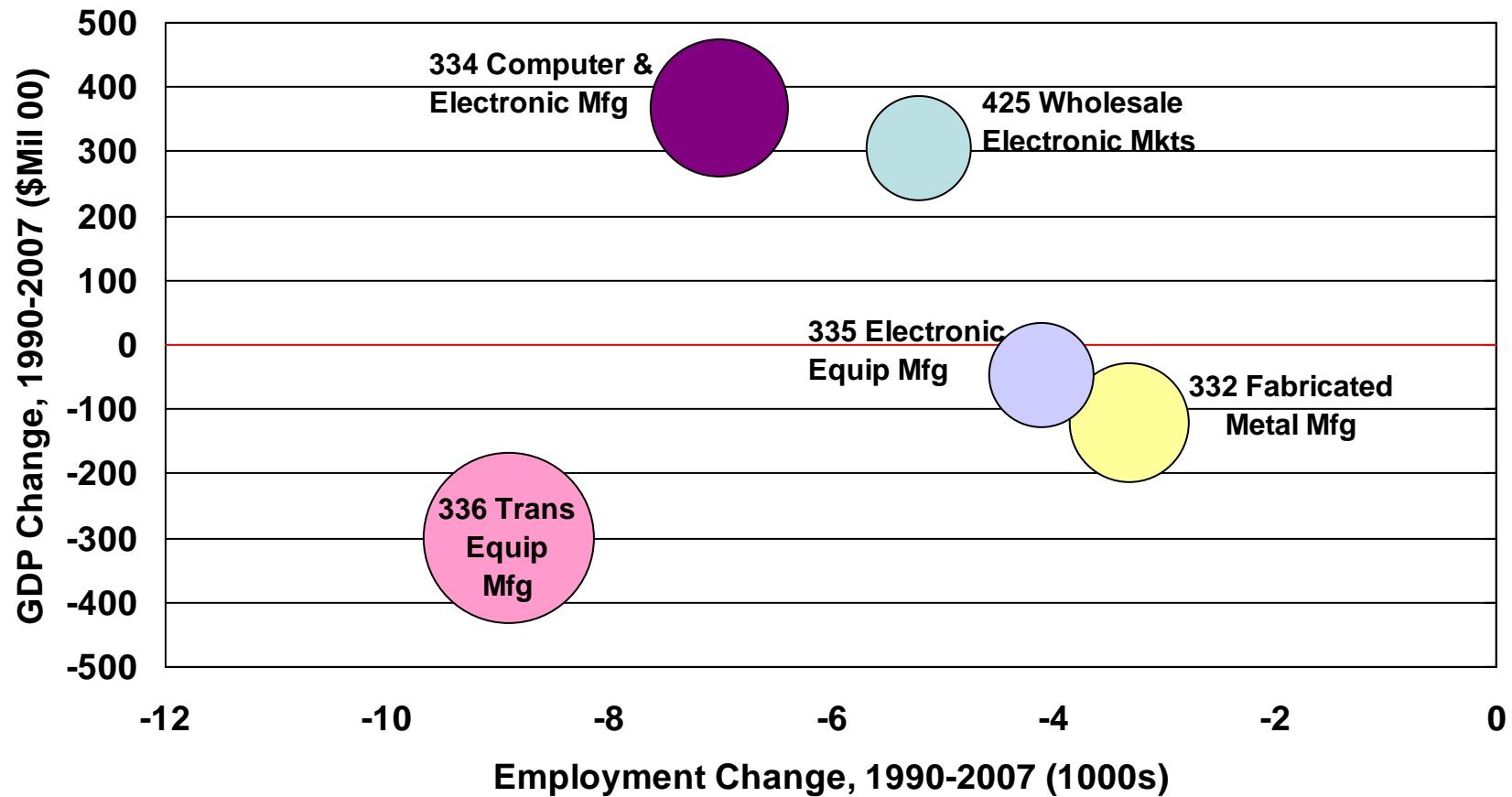
Of the five industries\* with the largest employment gains, all had increases in GDP. Securities had by far the greatest increases.



Source: Moody's Economy.com

\*More than 500 employees and \$100M revenues in 2007

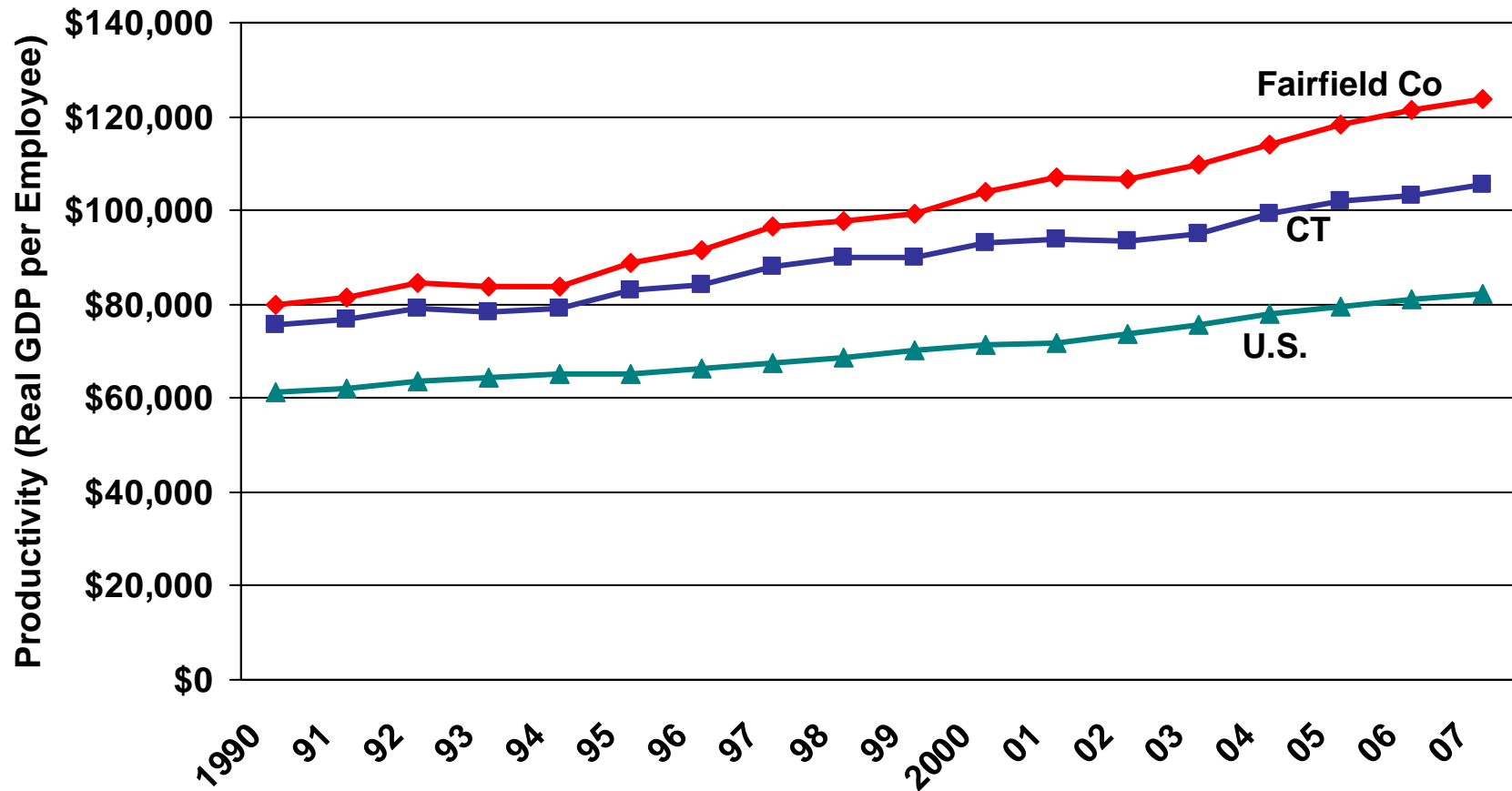
Of the five industries\* with the largest employment losses, four were manufacturing.  
Two of the industries had GDP gains.



Source: Moody's Economy.com

\*More than 500 employees and \$100M revenues in 2007

Fairfield County's productivity was greater than the state and nation. After 2000 the gap widened.



Source: Moody's Economy.com

# Southwest Region Occupations Ranked by Total Projected Openings

	Employment		Annual	Total	Mid Wage 2007	Training
	2004	2014	Growth	Annual		
			Openings	Openings		
Retail Salespersons	10,810	12,380	156	549	\$24,782	Short-term on-the-job
Cashiers	9,690	10,120	42	514	\$18,957	Short-term on-the-job
Waiters and Waitresses	5,040	5,720	68	327	\$17,657	Short-term on-the-job
Customer Service Representatives	6,940	8,130	120	223	\$37,749	Moderate on-the-job
Janitors & Cleaners, Except Maids	7,110	7,920	81	216	\$22,335	Short-term on-the-job
Registered Nurses	6,310	7,100	78	210	\$63,999	Associate degree
Food Prep, Serving Workers, Fast Food	3,470	3,960	49	200	\$18,504	Short-term on-the-job
Accountants and Auditors	5,380	6,330	94	196	\$70,391	Bachelor's degree
Office Clerks, General	7,420	7,600	17	182	\$27,945	Short-term on-the-job
Executive Secretaries & Admin Assistants	5,480	6,080	60	165	\$45,676	Moderate on-the-job

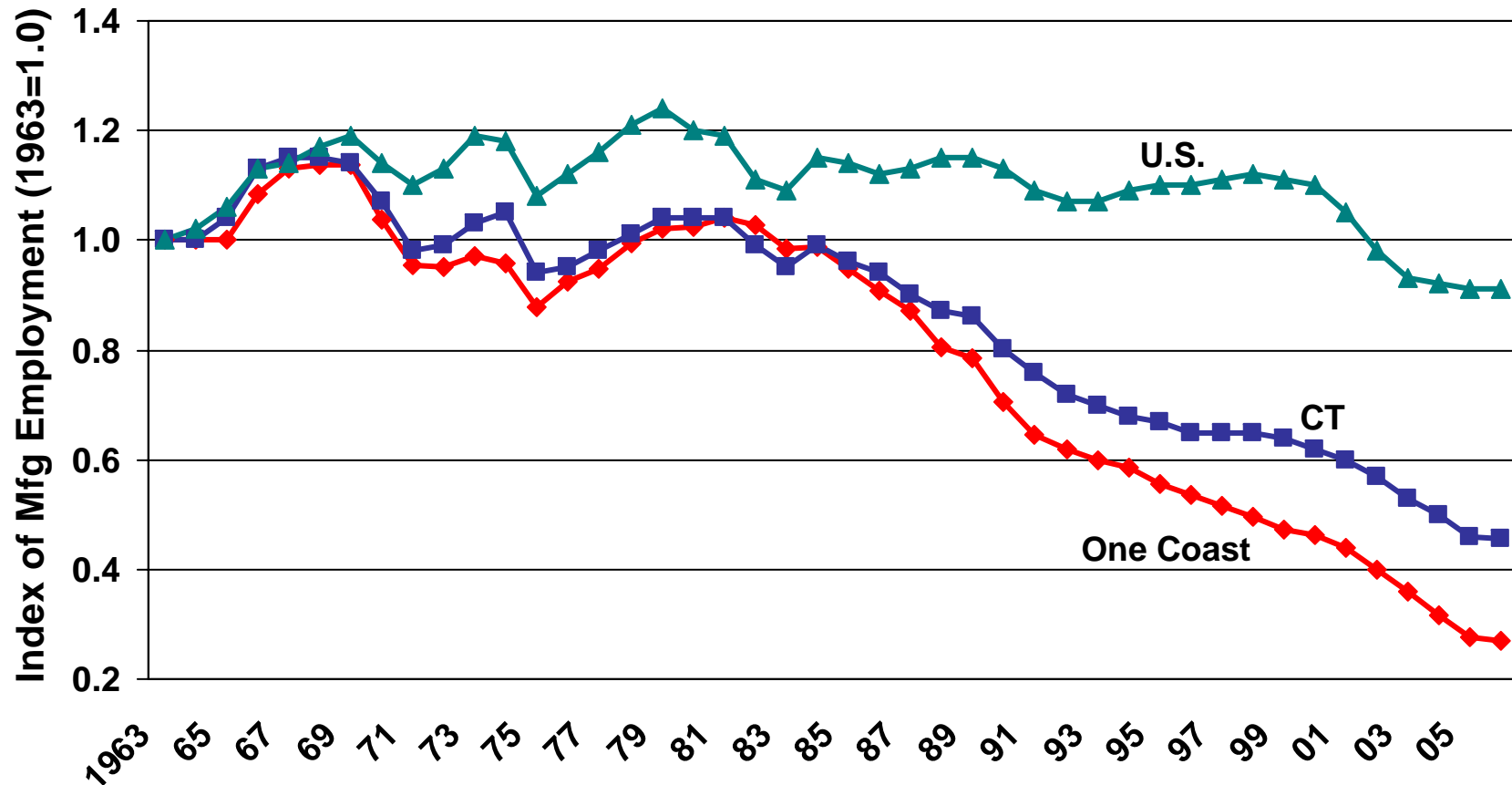
Source: CT Department of Labor

# Southwest Region Occupations Requiring Postsecondary Education or Training Ranked by Projected Growth Openings

	Employment		Annual	Total	Mid Wage 2007	Training
	2004	2014	Growth	Annual		
			Openings	Openings		
Securities, Commod & Financial Sales Agents	3,840	4,940	110	153	>\$145,600	Bachelor's degree
Financial Analysts	2,250	3,210	95	129	\$115,744	Bachelor's degree
Accountants and Auditors	5,380	6,330	94	196	\$70,391	Bachelor's degree
Registered Nurses	6,310	7,100	78	210	\$63,999	Associate degree
General and Operations Managers	4,660	5,250	59	147	\$142,206	Work experience plus bachelor's or higher
Computer Software Engineers, Applications	1,820	2,380	56	74	\$92,587	Bachelor's degree
Computer Systems Analysts	2,070	2,620	55	78	\$82,748	Bachelor's degree
Financial Managers	2,910	3,430	52	93	\$123,663	Work experience plus bachelor's or higher
Nursing Aides, Orderlies, and Attendants	4,360	4,820	46	103	\$28,623	Postsecondary vocational training
Hairdressers, Hairstylists, and Cosmetologists	2,450	2,880	43	90	\$27,095	Postsecondary vocational training

Source: CT Department of Labor

After 1982, manufacturing employment in the One Coast region began a steady decline.



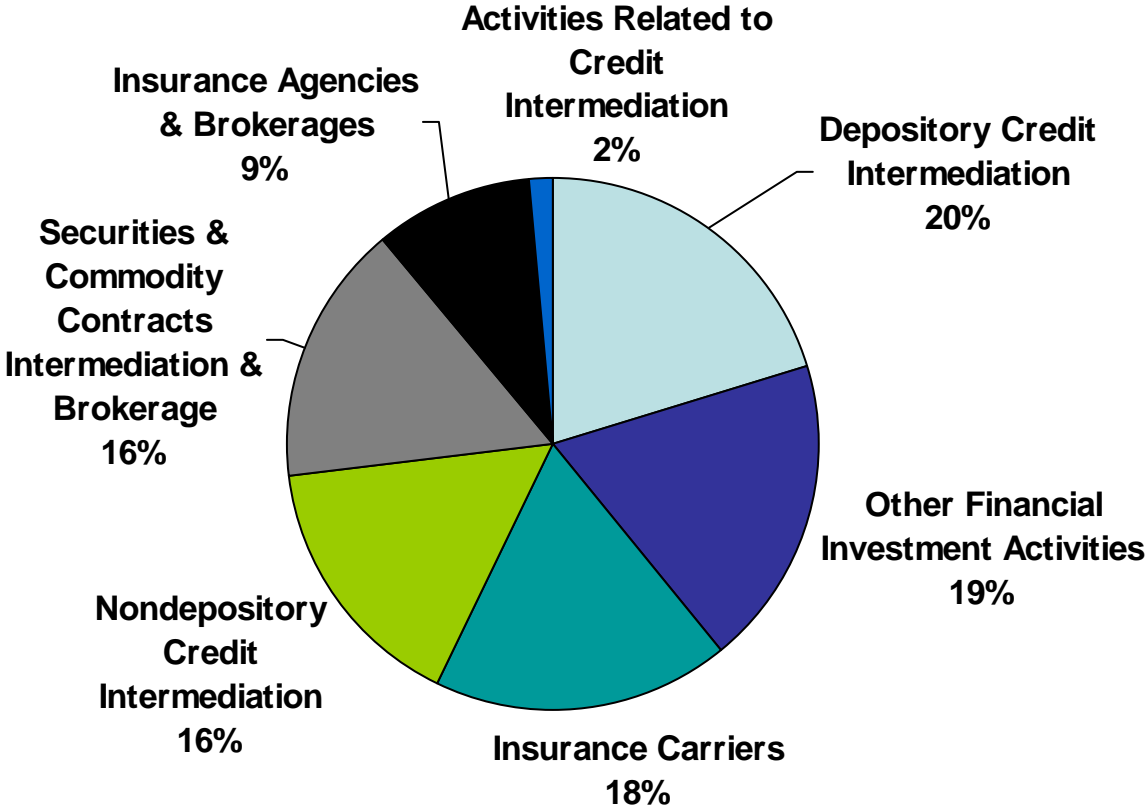
Sources: CT Department of Labor; U.S. Bureau of Labor Statistics

# Most every manufacturing industry in Fairfield County lost employment between 1990 and 2007.

NAICS	Industry Description	Emp (1000s)		Emp Change	
		1990	2007	1990-2007 (1000s)	1990-2007 (%)
311	Food Manufacturing	2.3	1.5	-0.8	-35%
312	Beverage & Tobacco Product Manufacturing	0.5	0.4	-0.1	-21%
313	Textile Mills	0.5	0.0	-0.4	-95%
314	Textile Product Mills	0.3	0.2	0.0	-5%
315	Apparel Manufacturing	0.8	0.1	-0.7	-92%
316	Leather & Allied Product Manufacturing	0.2	0.2	0.0	19%
321	Wood Product Manufacturing	0.3	0.4	0.0	2%
322	Paper Manufacturing	1.5	0.8	-0.7	-45%
323	Printing & Related Support Activities	3.5	1.5	-2.0	-57%
324	Petroleum & Coal Products Manufacturing	0.2	0.3	0.1	50%
325	Chemical Manufacturing	8.8	6.0	-2.8	-32%
326	Plastics & Rubber Products Manufacturing	2.8	1.6	-1.3	-45%
327	Nonmetallic Mineral Product Manufacturing	0.5	0.3	-0.2	-44%
331	Primary Metal Manufacturing	0.7	0.4	-0.3	-46%
332	Fabricated Metal Product Manufacturing	7.1	3.8	-3.3	-47%
333	Machinery Manufacturing	8.7	5.8	-3.0	-34%
334	Computer & Electronic Product Manufacturing	11.9	4.9	-7.0	-59%
335	Electrical Equipment, Appliance & Component Manufacturing	6.9	2.8	-4.1	-59%
336	Transportation Equipment Manufacturing	16.4	7.5	-8.9	-54%
337	Furniture & Related Product Manufacturing	0.8	0.9	0.1	17%
339	Miscellaneous Manufacturing	3.9	2.6	-1.3	-34%

Source:  
Moody's  
Economy.  
com

# A number of industries comprised finance and insurance sector employment in Fairfield County in 2005.



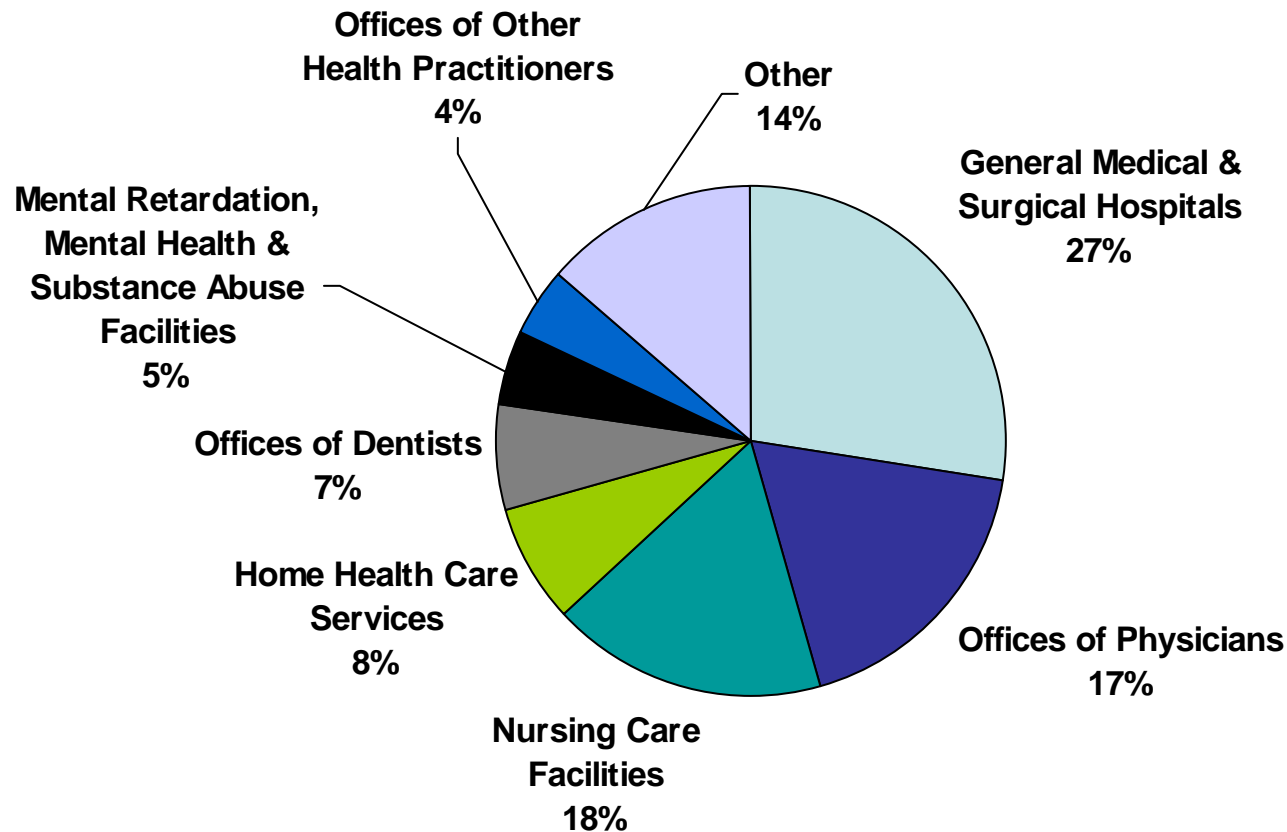
Source: U.S. Census, County Business Patterns

# Connecticut's Insurance and Finance Services (IFS) Center for Educational Excellence

- Workforce initiative developed by insurance and financial services companies
  - provides free skills training to incumbent and new workers
  - addresses short and long term labor needs of the IFS sector
- Offered at Norwalk Community College and Capital Community College, Hartford
- Funded by the U.S. Department of Labor since 2006
- 275 workers trained since 2007
- Collaborators include The Business Council of Fairfield County, The Workplace, Inc., Southwestern Connecticut's Regional Workforce Board, the Connecticut IFS Cluster and the Department of Economic and Community Development

Sources: The Business Council of Fairfield County; IFS Cluster

# More than one-quarter of the healthcare employment in Fairfield County was in hospitals in 2005.



Source: U.S. Census, County Business Patterns

# Key Findings about Healthcare in Connecticut

- Employer-sponsored health insurance premiums in Connecticut are among the highest in the U.S.
- Approximately 325,000 Connecticut residents lack health insurance.
- Connecticut has one of the highest average medical malpractice claims paid out in the U.S.
- Many Connecticut residents are not getting preventive services indicating gaps in the quality of care.
- Health disparities are prevalent.
- Connecticut's spending on prevention is sub-optimal.
- Providing an adequate health care workforce is a public health service.

Source: The Business Council of Fairfield County, *Connecticut Health Scorecard*, December 2007.

# BioSciences

- There are almost 18,000 persons employed in the biosciences sector in Connecticut
- Effects of employment and spending by the State's bioscience industry are felt throughout economy
  - According to an independent analysis
    - Every bioscience job in Connecticut supported a total of 3.03 jobs in the State in 2005
    - Total impact on the state's economy of employment in the bioscience industry was equivalent to almost 60,000 jobs
    - Total impact of bioscience payroll and non-payroll spending in the state was over \$10 billion

Sources: Connecticut United for Research Excellence; Mark A. Thompson, Ph.D., School of Business at Quinnipiac University, 2005

# Key Findings - Employment

- Shift in spatial distribution of jobs has implications for urban redevelopment, effects of sprawl and transportation.
- Industry mix of employment is well-balanced although wages (and tax revenues) can fluctuate.
- Occupations with largest total projected openings require on-the-job training are relatively lower-paying jobs, creating difficulties to live in region.
- Occupations requiring postsecondary education or training need young professionals to fill posts. Without these workers, businesses may find it difficult to grow in the region.